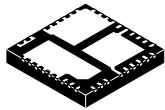


MECHANICAL CASE OUTLINE

PACKAGE DIMENSIONS

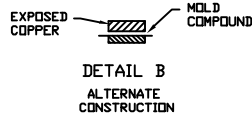
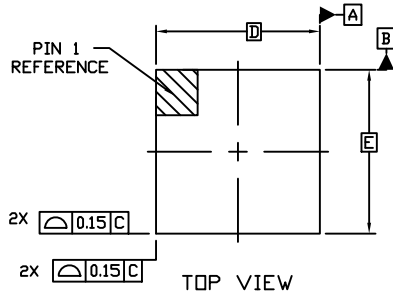
ON Semiconductor®



QFN20 6x6, 0.5P
CASE 485FC
ISSUE B

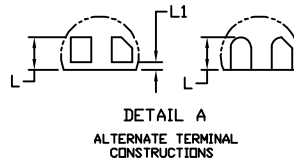
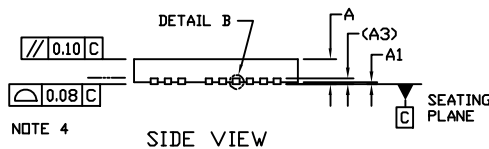
DATE 08 SEP 2017

SCALE 2:1



NOTES:

1. DIMENSIONING AND TOLERANCING PER ASME Y14.5M, 1994.
2. CONTROLLING DIMENSION: MILLIMETERS
3. DIMENSION b APPLIES TO PLATED TERMINAL AND IS MEASURED BETWEEN 0.15 AND 0.30 FROM THE TERMINAL TIP.
4. COPLANARITY APPLIES TO THE EXPOSED PADS AS WELL AS THE TERMINALS.



DIM	MILLIMETERS	
	MIN.	MAX.
A	0.80	1.00
A1	---	0.05
A3	0.20	REF
b	0.18	0.30
D	6.00	BSC
D2	3.15	3.35
D3	2.50	2.60
D4	2.15	2.35
D5	1.50	1.60
E	6.00	BSC
E2	4.15	4.25
E3	2.38	2.48
E4	2.28	2.48
E5	2.20	2.40
L	0.30	0.50
L1	---	0.15
L3	0.10	0.30

