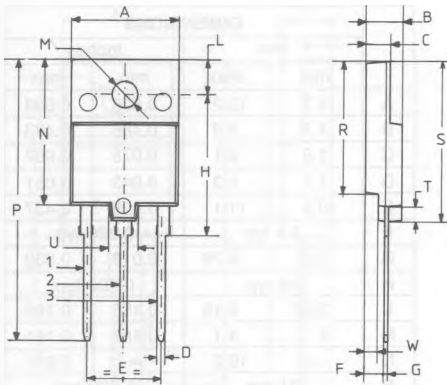


**4000V DC FULLY ISOLATED  
VERSION OF THE TO-218  
PACKAGE CONFORMS TO UL AND  
VDE SAFETY STANDARDS**

## MECHANICAL DATA



PC-0288

	DIMENSIONS			
	mm		inches	
	min	max	min	max
A	15.8	16.2	0.622	0.637
B	5.35	5.65	0.210	0.222
C	3.3	3.8	0.130	0.149
D	1.05	1.25	0.041	0.049
E	10.8	11.2	0.425	0.441
F	2.9	3.1	0.114	0.122
G	0.45	1	0.017	0.039
H	20.25	20.75	0.797	0.817
L	4.85	5.25	0.190	0.206
M	3.5	3.7	0.137	0.145
N	20.8	21.2	0.818	0.834
P	40.5	42.5	1.594	1.673
R	19.1	19.9	0.752	0.783
S	22.8	23.6	0.897	0.929
T	2.1	2.3	0.082	0.090
U	4.6 typ.		0.181 typ.	
W	1.88	2.08	0.074	0.081

pin 1: GATE - pin 2: DRAIN - pin 3: SOURCE