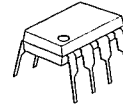


PRECISION VOLTAGE COMPARATOR

■ GENERAL DESCRIPTION

The NJM311 is a voltage comparator that has low input currents. It is also designed to operate covering a wider range of supply voltages from Standard $\pm 15V$ op amp supplies down to the single 5V supply used for IC logic. Its output is compatible with RTL, DTL and TTL as well as MOS circuits. Further more, it can drive lamps or relays, switching voltages up to 40V at currents as high as 50mA. Offset balancing is provided, and the outputs can be OR wired.

■ PACKAGE OUTLINE



NJM311D

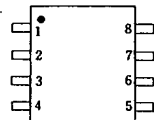


NJM311M

■ FEATURES

- Operating Voltage (+5V ~ +36V)
- Single Supply Operation
- Single Circuit
- With V_{IO} Trim Terminal
- Response Time (200ns typ.)
- Package Outline DIP8, DMP8
- Bipolar Technology

■ PIN CONFIGURATION

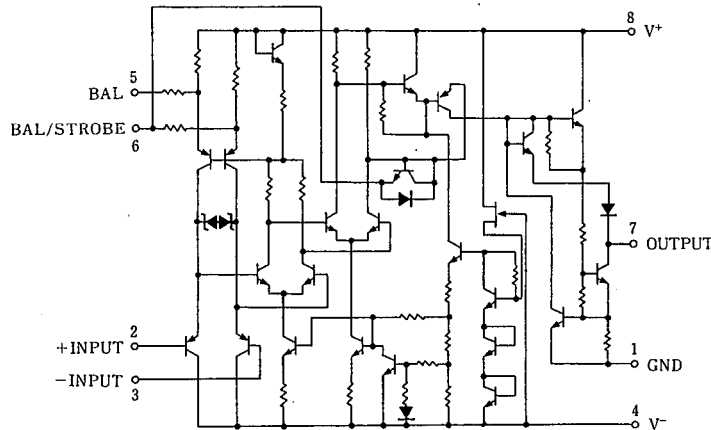


NJM311D
NJM311M

PIN FUNCTION

1. GND
2. +INPUT
3. -INPUT
4. V^-
5. BAL
6. BAL/STROBE
7. OUTPUT
8. V^+

■ EQUIVALENT CIRCUIT



NJM311

■ ABSOLUTE MAXIMUM RATINGS

(Ta=25°C)

PARAMETER	SYMBOL	RATINGS	UNIT
Supply Voltage	V ⁺ /V ⁻	36(±18)	V
Output to Negative Supply Voltage	V ₇₋₄	40	V
Ground to Negative Supply Voltage	V ₁₋₄	30	V
Differential Input Voltage	V _{ID}	±30	V
Input Voltage	V _{IN}	±15 (note 1)	V
Power Dissipation	P _D	(DIP8) 500	mW
		(DMP8) 300	mW
Operating Temperature Range	T _{opr}	-40 ~ +85	°C
Storage Temperature Range	T _{stg}	-40 ~ +125	°C

(note) For supply voltage less than ±15V, the absolute input voltage is equal to the supply voltage.

■ ELECTRICAL CHARACTERISTICS:

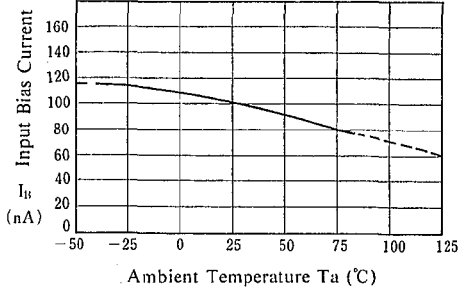
(V⁺/V⁻ = ±15V, Ta=25°C)

PARAMETER	SYMBOL	TEST CONDITION	MIN.	TYP.	MAX.	UNIT
Input Offset Voltage	V _{IO}	R _s ≤ 50kΩ	—	2.0	7.5	mV
Input Offset Current	I _{IO}		—	6.0	50	nA
Input Bias Current	I _B		—	100	250	nA
Voltage Gain	A _V		—	106	—	dB
Response Time	t _R		—	200	—	ns
Saturation Voltage	V _{SAT}	V _{IN} ≤ -10mV, I _O = 50mA	—	0.75	1.5	V
Stroke ON Current	I _{STR}		—	3.0	—	mA
Output Leakage Current	I _{LEAK}	V _{IN} ≥ 10mV, V _O = 35V	—	0.2	50	nA
Input Common Mode Voltage Range	V _{ICM}		—	±14	—	V
Positive Quiescent Current	I ⁺		—	5.1	7.5	mA
Negative Quiescent Current	I ⁻		—	4.1	5.0	mA

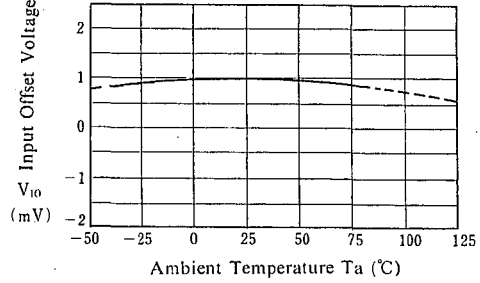
5

■ TYPICAL CHARACTERISTICS

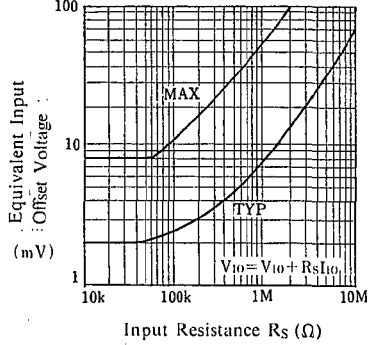
Input Bias Current vs. Temperature
($V^+/V^- = \pm 15V$)



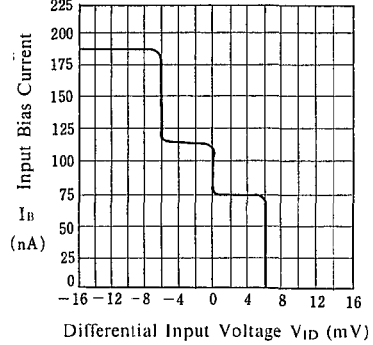
Input Offset Voltage vs. Temperature
($V^+/V^- = \pm 15V$)



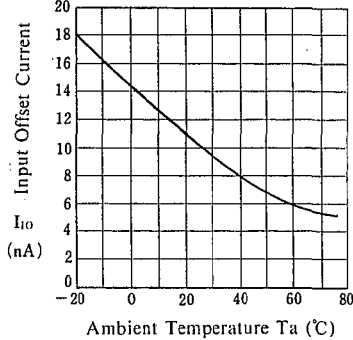
Offset Voltage vs. Input Resistance
($V^+/V^- = \pm 15V, T_a = 25^\circ C$)



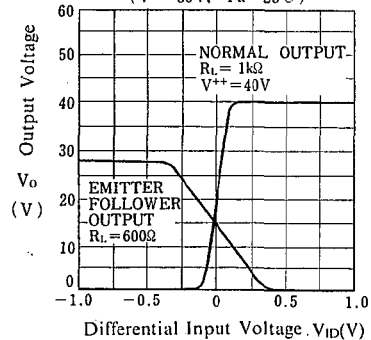
Input Bias Current vs. Differential Input Voltage
($V^+/V^- = \pm 15V, T_a = 25^\circ C$)



Input Offset Current vs. Temperature
($V^+/V^- = \pm 15V$)



Output Voltage vs. Differential Input Voltage
($V^+ = 30V, T_a = 25^\circ C$)

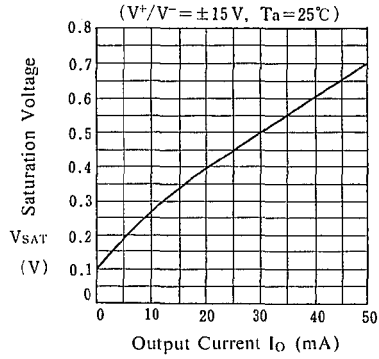


5

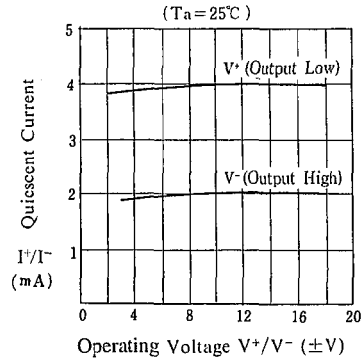
NJM311

■ TYPICAL CHARACTERISTICS

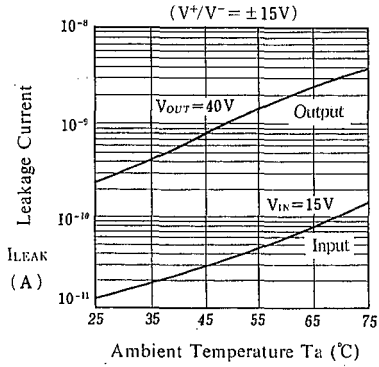
Saturation Voltage vs. Output Current



Quiescent Current vs. Operating Voltage



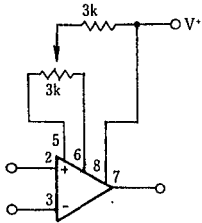
leakage Current vs. Temperature



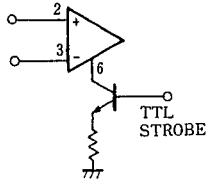
5

■ TYPICAL APPLICATIONS

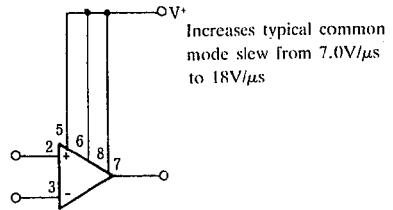
Offset Null Circuit



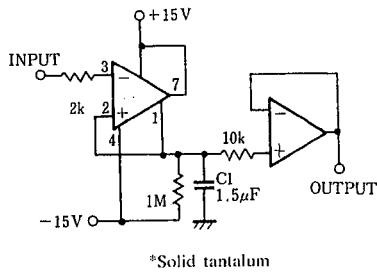
Strobing



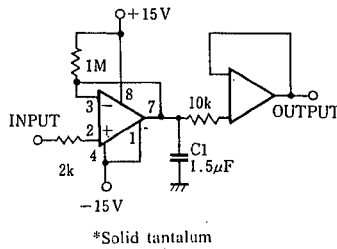
Increasing Input Stage Current



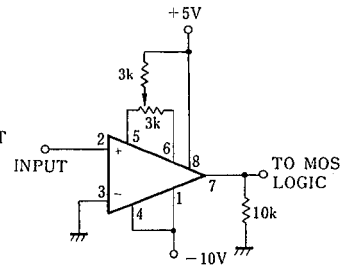
Positive Peak Detector



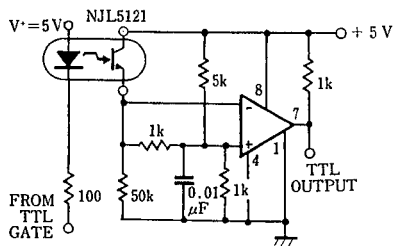
Negative Peak Detector



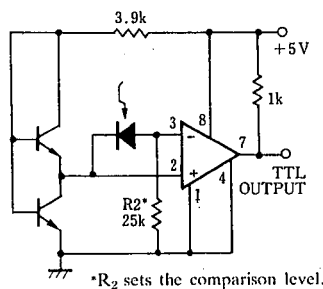
Zero Crossing Detector driving MOS Logic



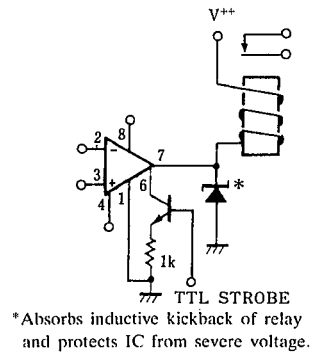
Digital Transmission Isolator



Precision Photodiode Comparator



Relay Driver with Strobe



NJM311

MEMO

[CAUTION]

The specifications on this databook are only given for information, without any guarantee as regards either mistakes or omissions. The application circuits in this databook are described only to show representative usages of the product and not intended for the guarantee or permission of any right including the industrial rights.