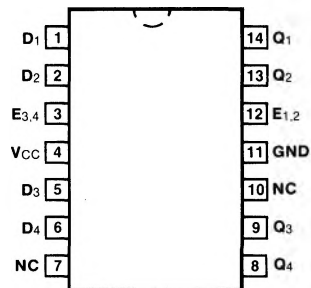


# 54/7477

## QUAD D-TYPE LATCH

### CONNECTION DIAGRAM PINOUT A

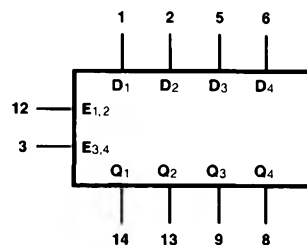


**DESCRIPTION** — The '77 contains four D-type latches used for temporary storage. Each latch shares an Enable input with one other latch. When the Enable input is HIGH, a latch is transparent, i.e., the Q output follows the D input each time it changes. When the Enable goes LOW, the information (that was present at the D input when the transition occurred) is retained at the Q output. For Truth Table, specifications, and logic diagrams, refer to the '75 data sheet, but note that  $\bar{Q}$  is not available on the '77.

**ORDERING CODE:** See Section 9

PKGS	PIN OUT	COMMERCIAL GRADE	MILITARY GRADE	PKG TYPE
		V <sub>CC</sub> = +5.0 V ±5%, T <sub>A</sub> = 0° C to +70° C	V <sub>CC</sub> = +5.0 V ±10%, T <sub>A</sub> = -55° C to +125° C	
Plastic DIP (P)	A	7477PC		9A
Ceramic DIP (D)	A	7477DC	5477DM	6A
Flatpak (F)	A	7477FC	5477FM	3I

### LOGIC SYMBOL



V<sub>CC</sub> = Pin 4  
GND = Pin 11  
NC = Pin 7, 10

**INPUT LOADING/FAN-OUT:** See Section 3 for U.L. definitions

PIN NAMES	DESCRIPTION	54/74 (U.L.) HIGH/LOW
D <sub>1</sub> — D <sub>4</sub>	Data Inputs	2.0/2.0
E <sub>1,2</sub>	Enable Input, Latches 1, 2	4.0/4.0
E <sub>3,4</sub>	Enable Input, Latches 3, 4	4.0/4.0
Q <sub>1</sub> — Q <sub>4</sub>	Latch Outputs	10/10